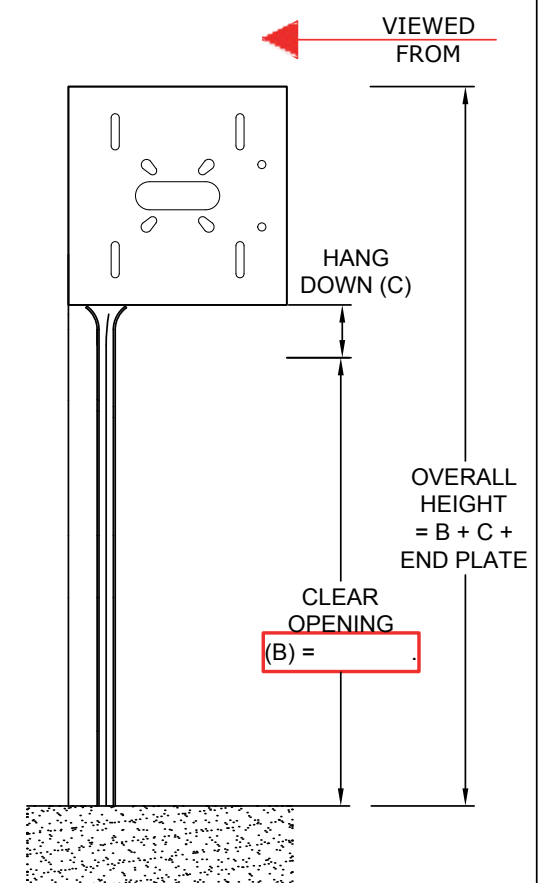
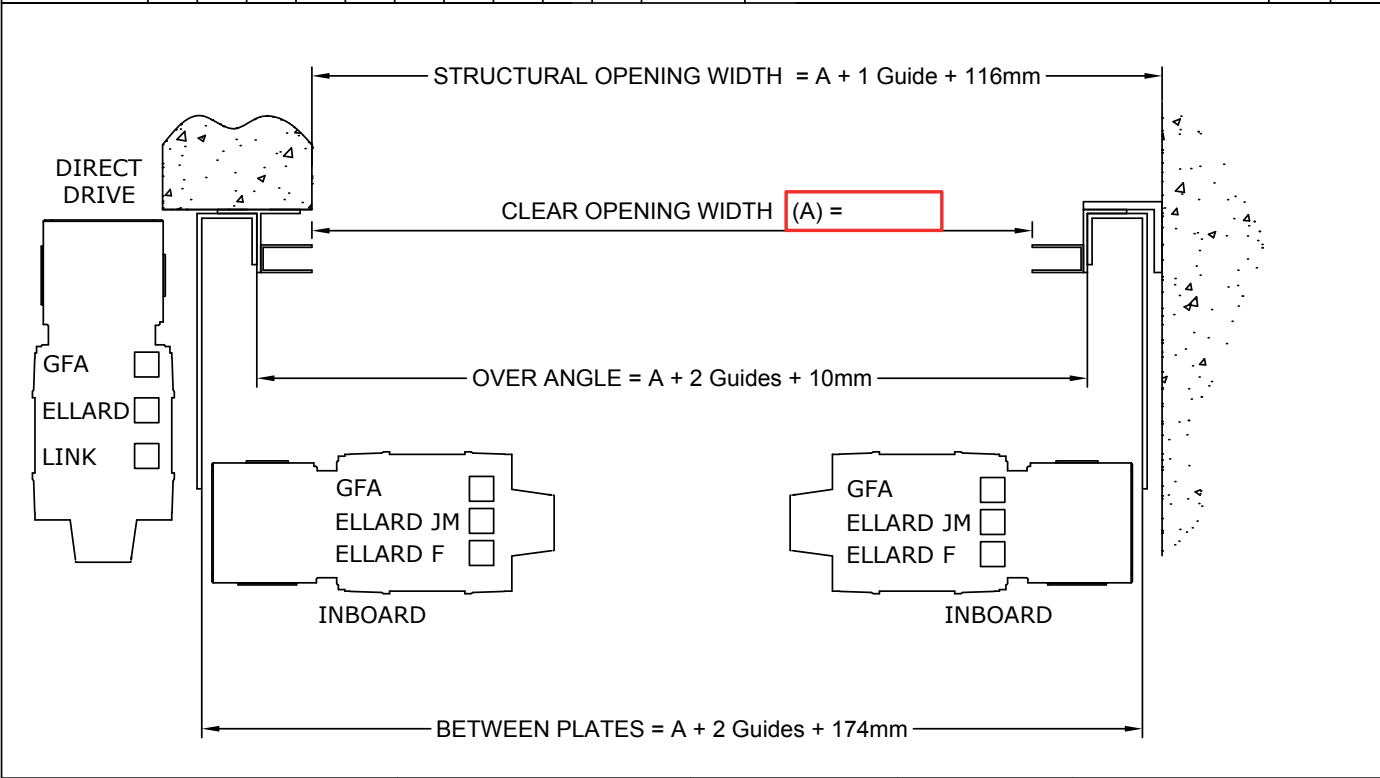


SECEURODOOR INDUSTRIAL DOOR - LH FACE FIX / RH REVEAL FIX - 75 77 95 100

THIS DRAWING MUST BE RETURNED WITH AN ORDER FORM

SINGLE PHASE POWER:	<input type="checkbox"/>	3 PHASE POWER:	<input type="checkbox"/>	GUIDE SIZE - 20g/22g (75x50 Guide Angle) (Straight) = G	<input type="checkbox"/>	65	<input type="checkbox"/>	100
				GUIDE SIZE - 20g/22g (75x50 Guide Angle) (Wind) = G	<input type="checkbox"/>	65	<input type="checkbox"/>	100
INSET ANGLE (Left Only)	<input type="checkbox"/>	OUTSET ANGLE (Left or Right)	<input type="checkbox"/>	GUIDE SIZE - 77mm Insulated Slat (75x50 Guide Angle) = G	<input type="checkbox"/>		95	
				GUIDE SIZE - 95mm / 100mm Insulated Slat (100x50 Guide Angle) (Straight) = G	<input type="checkbox"/>		80	
END PLATE:	350	400	450	500	550			
				GUIDE SIZE - 95mm Insulated Slat (100x50 Guide Angle) (Wind) = G	<input type="checkbox"/>		80	



STRUCTURE MUST BE CAPABLE OF CARRYING SHUTTER WEIGHT APPROX 25Kg / Sqm

END PLATE SELECTION BY OPENING HEIGHT

	Hang Down	350	400	450	500	550
20G	50mm	2-3.8m	3.8-5m	5-6m	6-7m	
22G	50mm	2-3.8m	3.8-5m			
77	80mm	2-3m	3-4m	4-5m		
95	100mm	2-3m	3-4m	4-5m	5-6m	6-7m
100	100mm		2-3.5m	3.5-4.5m	4.5-5.8m	5.8-7m

NOT TO SCALE		QUANTITY:	COMPANY:
DRAWN BY:	PPC		
DATE:	09/10/15		
REV:	4	JOB REF:	
DWG NO.:	INDUS003		
		SIGNATURE:	
		DATE:	